

12mm  
Porcelain  
Bench Material



i-stone



# Istone intelligent stoneware porcelain bench material.

A collaboration of the very best that Europe has to offer.

Sophisticated designs, maintenance free, suitable for commercial and domestic kitchen tops;

- Dining tables
- Outdoor tables and furniture
- Splashbacks
- Cabinetry
- Exterior cladding

# Our Suppliers

## Florim Stone:

Nature meets technological innovation, signalling the arrival of FLORIM stone, porcelain stoneware that evolves to explore new applications.

A brand that aims to combine the performance and functionality of this material with the maximum personalisation of space. Porcelain stoneware slabs in a single large format (exceeding 160 x 320 cm) available in three thicknesses (6, 12 and 20 mm) and different finishes, bringing creative flexibility, plus high technical and aesthetic performance, to provide furnishing designers the stylish solutions they need.

A kitchen top and all its complements, then sinks, bathrooms, bedrooms, doors and furniture all finally customised in style and design, and without compromise. FLORIM stone gives space to endless aesthetic, colourful, versatile options. Inspiration in various forms provides a selection of slabs to cater for a wide range of styles. Material quality, attention to detail and technical performance are once again those backed by fifty years of Florim experience.

Consisting of a natural mixture of ceramic clays and mineral colours, FLORIM stone slabs are porcelain stoneware, unalterable over time, and stain resistant, resistant to high temperatures and atmospheric stress, scratch-resistant, completely waterproof, UV resistant, hygienic and easy to clean.

## Inalco Itopker:

Is a specialist supplier of ceramic tiles and services for the construction industry and architecture and interior design sectors. Combining cutting-edge technology, the best know-how and continuous innovation in production processes and products allow us to create extraordinary unique products according to the latest trends in decoration.

## Nuovo Corso:

Is the engine room for 12mm Porcelain.

They specialise in two things, great design and volume based pricing.

For projects that might meet budget constraints, Nuovo Corso will supersede your expectation in look and costings.

# Technical Details:

## Maintenance:

Porcelain is a completely vitreous material. It has a porosity of 0.01% which means it doesn't need to be sealed and typical kitchen stains can be cleaned off easily with a damp cloth or common household cleaning products.

## Hygiene:

As the material is non-porous it prevents the build up of mould and bacteria. This makes it suitable for preparing food.

## Strength:

12mm Porcelain is a self supporting material which doesn't need any extra substrates in the installation process. It can be installed the same way as a natural stone. Due to the materials natural strength, it has a high resistance to impacts from everyday household objects and utensils.

A Static test was conducted, whereby more than 250kg was put onto of a piece of material with a surface area of 1200x600mm and just a support around the perimeter, without it being damaged in any way and without the surface flatness being affected.

## Hardness:

It has a MOH scale hardness of 8/10 which is higher than stainless steel thus being almost impossible to scratch or abrade.

## Heat:

Porcelain slabs are resistant to very sharp differences in temperatures, such as hot kitchen pans used to cook food. These utensils can be placed onto its surface without being damaged or releasing vapour or toxic substances.

## Freezing:

As it is non-porous, it isn't affected by ice, frost or low temperatures, thus being suitable for outdoor areas. It has been tested through several freeze-thaw cycles.

i-stone  
**Cosmos**  
**Piedra**

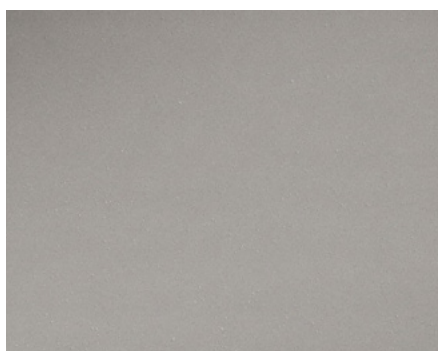
---

Cosmos reflects the random element of the matter that makes up the universe. A multitude of particles are randomly scattered across its large format surface, transforming each tile into something totally unique.

Finish:  
**Natural**

Thickness:  
**12mm**

Formats:  
**3200X1500X12mm**



Sample colour  
Piedra

## i-stone Cosmos Piedra

Infinite number of Faces 

Format	Colour	Finish	Packing			
			Weight of Whole slab	Weight per m <sup>2</sup>	Slabs per A frame	Weight per A frame
150 X 320 cm	Piedra	Natural	150 Kg*	32 Kg*	20*	3171 Kg*

\*The packaging data refers to the sale of a complete A Frame; an additional charge will be applied to lower quantities to cover the costs of handling and packaging these items. Weights shown here may slightly vary depending on the production lot.

# i-stone

## Jasper

## Moka Abuj

---

Jasper takes us to the solidity of large rocks and to the wildest nature that surrounds us as a primary force. This new stone bush-hammered finish conveys the material and chromatic richness of natural stone, restrained and energetic, and the strength of porcelain tiles.

Finish:

**Bush-hammered**

Thickness:

**12mm**

Formats:

**3200X1500X12mm**





Sample colour  
Jasper Moka

## i-stone Jasper Moka Abuj

6 number of Faces 

Format	Colour	Finish	Packing			
			Weight of Whole slab	Weight per m <sup>2</sup>	Slabs per A frame	Weight per A frame
150 X 320 cm	Jasper Moka	Bush hammered	150 Kg*	32 Kg*	20*	3171 Kg*

\*The packaging data refers to the sale of a complete A Frame; an additional charge will be applied to lower quantities to cover the costs of handling and packaging these items. Weights shown here may slightly vary depending on the production lot.

# i-stone Pacific Gris Abuj

---

Inspired by stone eroded by the sea. It stands out for its gentle bush-hammered relief pattern and, in particular, the worn effect of its abundant veins, bringing movement to the surface.

Finish:

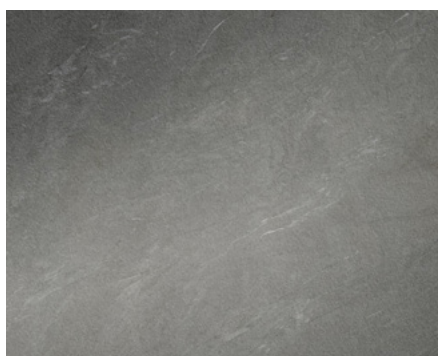
**Bush-hammered**

Thickness:

**12mm**

Formats:

**3200X1500X12mm**



Sample colour  
Gris Abujardado

## i-stone Pacific Gris Abuj

6 number of Faces 

Format	Colour	Finish	Packing			
			Weight of Whole slab	Weight per m <sup>2</sup>	Slabs per A frame	Weight per A frame
150 X 320 cm	Gris	Bush Hammered	150 Kg*	32 Kg*	20*	3171 Kg*

\*The packaging data refers to the sale of a complete A Frame; an additional charge will be applied to lower quantities to cover the costs of handling and packaging these items. Weights shown here may slightly vary depending on the production lot.

# i-stone **Touché**

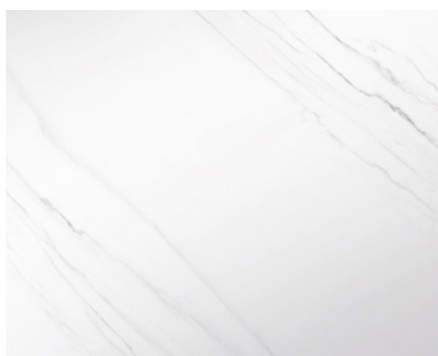
---

A surface inspired by superior classic marbles, with a subtle elegant veined pattern on a pure white background.

Finish:  
**Natural**

Thickness:  
**12mm**

Formats:  
**3200X1500X12mm**



Sample colour  
Super Blanco-Gris

## i-stone Touché

8 number of Faces 

Format	Colour	Finish	Packing			
			Weight of Whole slab	Weight per m <sup>2</sup>	Slabs per A frame	Weight per A frame
150 X 320 cm	Super Blanco-Gris	Natural	150 Kg*	32 Kg*	20*	3171 Kg*

\*The packaging data refers to the sale of a complete A Frame; an additional charge will be applied to lower quantities to cover the costs of handling and packaging these items. Weights shown here may slightly vary depending on the production lot.

# i-stone Storm

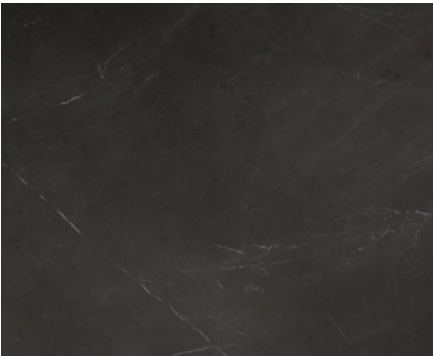
---

**Storm i-stone** is inspired by the dynamism and beauty of natural stone. A new version of a classic in dark grey with white veins, this solid surface evokes nature at its most vigorous in a contrasting gentle natural finish.

Finish:  
**Natural**

Thickness:  
**12mm**

Formats:  
**3200X1500X12mm**



Sample colour  
Nero

## i-stone Storm

8 number of Faces 

Format	Colour	Finish	Packing			
			Weight of Whole slab	Weight per m <sup>2</sup>	Slabs per A frame	Weight per A frame
150 X 320 cm	Nero	Natural	150 Kg*	32 Kg*	20*	3171 Kg*

\*The packaging data refers to the sale of a complete A Frame; an additional charge will be applied to lower quantities to cover the costs of handling and packaging these items. Weights shown here may slightly vary depending on the production lot.

# i-stone **Silk**

---

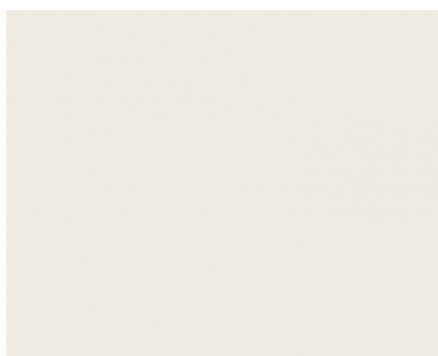
**Silk i-stone** countertop.  
A natural finishing in B-Blanco  
and B-Nero colours

Finish:  
**Natural**

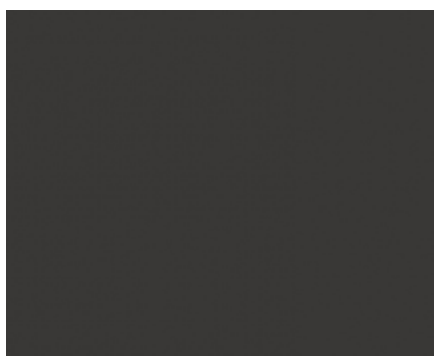
Thickness:  
**12mm**

Formats:  
**3200X1500X12mm**





Sample colour  
B-Blanco



Sample colour  
B-Nero

## i-stone Silk

Format	Colour	Finish	Packing			
			Weight of Whole slab	Weight per m <sup>2</sup>	Slabs per A frame	Weight per A frame
150 X 320 cm	B-Blanco B-Nero	Natural	150 Kg*	32 Kg*	20*	3171 Kg*

\*The packaging data refers to the sale of a complete A Frame; an additional charge will be applied to lower quantities to cover the costs of handling and packaging these items. Weights shown here may slightly vary depending on the production lot.

# i-stone Silk

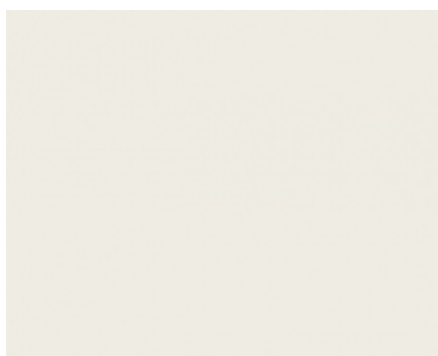
---

A natural finishing in B-Blanco  
and B-Nero colours.

Finish:  
**Natural**

Thickness:  
**12mm**

Formats:  
**3200X1500X12mm**



Sample colour  
B-Blanco



Sample colour  
B-Nero

i-stone  
**Silk**

Format	Colour	Finish	Packing			
			Weight of Whole slab	Weight per m <sup>2</sup>	Slabs per A frame	Weight per A frame
150 X 320 cm	B-Blanco B-Nero	Natural	150 Kg*	32 Kg*	20*	3171 Kg*

\*The packaging data refers to the sale of a complete A Frame; an additional charge will be applied to lower quantities to cover the costs of handling and packaging these items. Weights shown here may slightly vary depending on the production lot.

# i-stone **Marble** **Statuario**

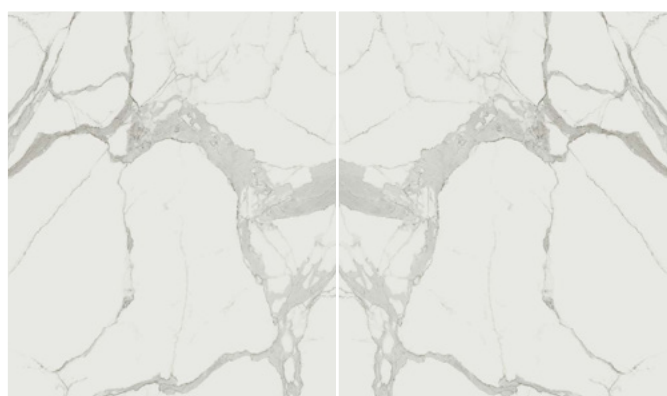
---

The versions of “Marble” are available in three different surface finishes: matt, and the characteristic velvet surface that provides a particular slightly wavy structure to the touch. It is an almost imperceptible movement that gives the material great depth and makes it pleasant to touch.

Finish:  
**Matt**

Thickness:  
**12mm**

Formats:  
**3200X1600X12mm**



Marble  
Statuario A

Marble  
Statuario B

## i-stone Marble Statuario (Bookmatch)

Format	Colour	Finish	Packing			
			Weight of Whole slab	Weight per m <sup>2</sup>	Slabs per A frame	Weight per A frame
160 X 320 cm	Statuario A Statuario B	Matt	165KG*	32 Kg*	22*	3600Kg*

\*The packaging data refers to the sale of a complete A Frame; an additional charge will be applied to lower quantities to cover the costs of handling and packaging these items. Weights shown here may slightly vary depending on the production lot.



i-stone  
**Marble**  
**Calacatta**  
**Gold**

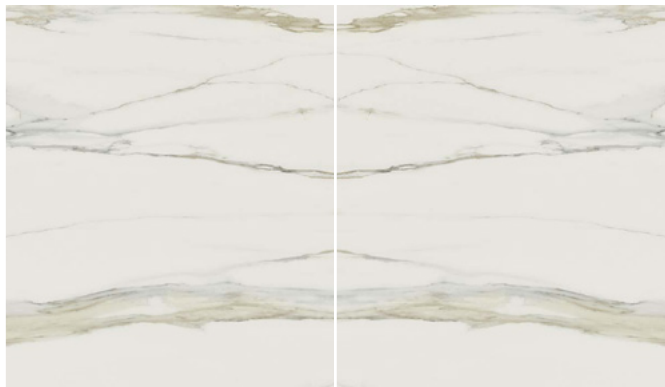
---

The versions of “Marble” are available in three different surface finishes: matt, and the characteristic velvet surface that provides a particular slightly wavy structure to the touch. It is an almost imperceptible movement that gives the material great depth and makes it pleasant to touch.

Finish:  
**Matt**

Thickness:  
**12mm**

Formats:  
**3200X1600X12mm**



Marble  
Calacatta Gold A

Marble  
Calacatta Gold B

i-stone  
**Marble Calacatta Gold (Bookmatch)**

Format	Colour	Finish	Packing			
			Weight of Whole slab	Weight per m <sup>2</sup>	Slabs per A frame	Weight per A frame
160 X 320 cm	Calacatta Gold A Calacatta Gold B	Matt	165KG*	32 Kg*	22*	3600Kg*

\*The packaging data refers to the sale of a complete A Frame; an additional charge will be applied to lower quantities to cover the costs of handling and packaging these items. Weights shown here may slightly vary depending on the production lot.

# i-stone

## Marble

## Calcatta Velvet

---

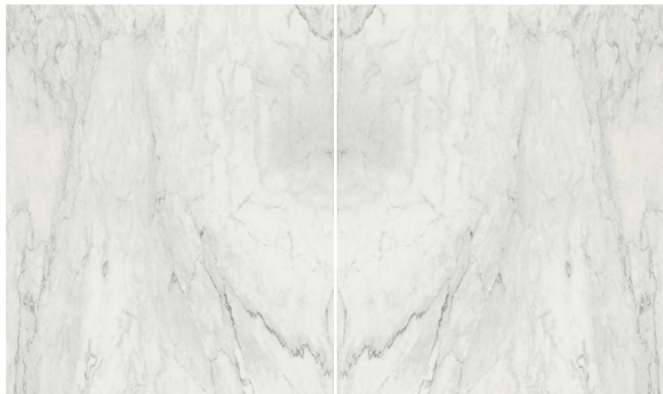
The versions of “Marble” are available in three different surface finishes: matt, and the characteristic velvet surface that provides a particular slightly wavy structure to the touch. It is an almost imperceptible movement that gives the material great depth and makes it pleasant to touch.

Finish:  
**Velvet**

Thickness:  
**12mm**

Formats:  
**3200X1600X12mm**





Marble  
Calacatta A

Marble  
Calacatta B

## i-stone Marble Calacatta Velvet (Bookmatch)

Format	Colour	Finish	Packing			
			Weight of Whole slab	Weight per m <sup>2</sup>	Slabs per A frame	Weight per A frame
160 X 320 cm	Calacatta A Calacatta B	Velvet	165KG*	32 Kg*	22*	3600Kg*

\*The packaging data refers to the sale of a complete A Frame; an additional charge will be applied to lower quantities to cover the costs of handling and packaging these items. Weights shown here may slightly vary depending on the production lot.

# i-stone Marble Marquinia

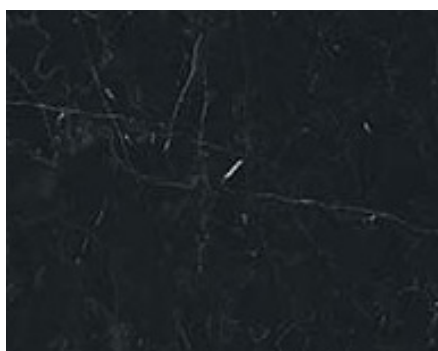
---

The versions of “Marble” are available in three different surface finishes: matt, and the characteristic velvet surface that provides a particular slightly wavy structure to the touch. It is an almost imperceptible movement that gives the material great depth and makes it pleasant to touch.

Finish:  
**Matt**

Thickness:  
**12mm**

Formats:  
**3200X1600X12mm**



Sample colour  
Black + white

## i-stone Marble Marquinia

Format	Colour	Finish	Packing			
			Weight of Whole slab	Weight per m <sup>2</sup>	Slabs per A frame	Weight per A frame
160 X 320 cm	Black + White	Matt	165KG*	32 Kg*	22*	3600Kg*

\*The packaging data refers to the sale of a complete A Frame; an additional charge will be applied to lower quantities to cover the costs of handling and packaging these items. Weights shown here may slightly vary depending on the production lot.

# i-stone Stone Brown

---

Vintage, elegant, modern, essential - the most recent stylistic trends find their own furnishing finish in the proposed stones without any functional compromises. Thanks to the production specifications of porcelain stoneware, the material provides high technical performance that stands up to a comparison to natural stone. It has no fear of stains, heat or scratches, it does not change colour and it is easy to maintain.

Finish:  
**Matt**

Thickness:  
**12mm**

Formats:  
**3200X1600X12mm**



Sample colour  
Brown

## i-stone Stone Brown

Format	Colour	Finish	Packing			
			Weight of Whole slab	Weight per m <sup>2</sup>	Slabs per A frame	Weight per A frame
160 X 320 cm	Brown	Matt	165KG*	32 Kg*	22*	3600kg*

\*The packaging data refers to the sale of a complete A Frame; an additional charge will be applied to lower quantities to cover the costs of handling and packaging these items. Weights shown here may slightly vary depending on the production lot.



i-stone  
**Calacatta**  
**Oro**

---

This range offers a variety of graphics lending creative scope to the most demanding designers, architects and studio artists. To create a classic product that fuses passion, research and excellence capable of reading the time and its ceaseless developments.

Finish:  
**Matt**

Thickness:  
**12mm**

Formats:  
**3200X1600X12mm**



Marble  
Calacatta Oro A

Marble  
Calacatta Oro B

i-stone  
**Calacatta Oro**

Format	Colour	Finish	Packing			
			Weight of Whole slab	Weight per m <sup>2</sup>	Slabs per A frame	Weight per A frame
160 X 320 cm	White - Gold	Matt	165KG*	32 Kg*	24*	3480kg*

\*The packaging data refers to the sale of a complete A Frame; an additional charge will be applied to lower quantities to cover the costs of handling and packaging these items. Weights shown here may slightly vary depending on the production lot.

# i-stone

## Calacatta

## Sky

---

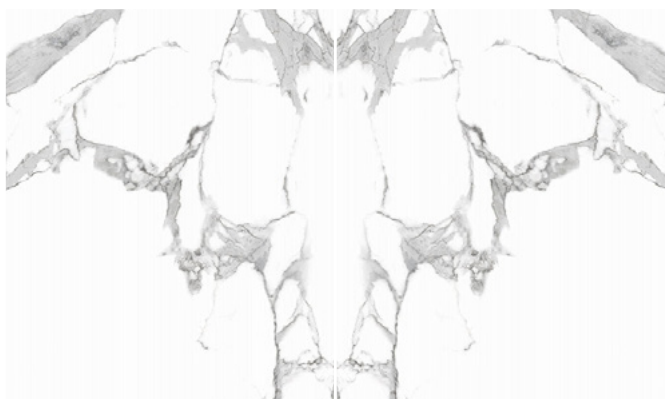
This range offers a variety of graphics lending creative scope to the most demanding designers, architects and studio artists. To create a classic product that fuses passion, research and excellence capable of reading the time and its ceaseless developments.

Finish:  
**Matt**

Thickness:  
**12mm**

Formats:  
**3200X1600X12mm**





Marble  
Calacatta Sky A

Marble  
Calacatta Sky B

## i-stone Calacatta Sky

Format	Colour	Finish	Packing			
			Weight of Whole slab	Weight per m <sup>2</sup>	Slabs per A frame	Weight per A frame
160 X 320 cm	White - Grey	Matt	165KG*	32 Kg*	24*	3480kg*

\*The packaging data refers to the sale of a complete A Frame; an additional charge will be applied to lower quantities to cover the costs of handling and packaging these items. Weights shown here may slightly vary depending on the production lot.

# i-stone

## **Arabescato**

---

This range offers a variety of graphics lending creative scope to the most demanding designers, architects and studio artists. To create a classic product that fuses passion, research and excellence capable of reading the time and its ceaseless developments.

Finish:

**Matt**

Thickness:

**12mm**

Formats:

**3200X1600X12mm**



Marble  
Arabescato A

Marble  
Arabescato B

## i-stone Arabescato

Format	Colour	Finish	Packing			
			Weight of Whole slab	Weight per m <sup>2</sup>	Slabs per A frame	Weight per A frame
160 X 320 cm	White - Gold	Matt	165KG*	32 Kg*	24*	3480kg*

\*The packaging data refers to the sale of a complete A Frame; an additional charge will be applied to lower quantities to cover the costs of handling and packaging these items. Weights shown here may slightly vary depending on the production lot.

# i-stone

## Azalai

---

Materials with character never lose their appeal. Azalai emulates fine marble whose powerful intensity lends surfaces an exclusive elegance.

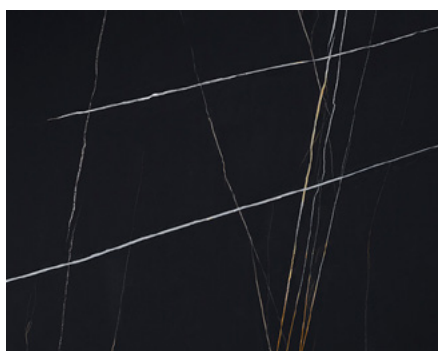
Thanks to its white and orange veins, set against a black background, the collection stands out for its spectacular natural beauty.

Azalai is perfect for creating timelessly beautiful, eclectic looking settings that make a lasting impression.

Finish:  
**Natural**

Thickness:  
**12mm**

Formats:  
**3200X1500X12mm**



Nero  
Natural

## i-stone Azalai

9 number of Faces 

Format	Colour	Finish	Packing			
			Weight of Whole slab	Weight per m <sup>2</sup>	Slabs per A frame	Weight per A frame
150 X 320 cm	Nero	Natural	150KG*	32 Kg*	20*	3171kg*

\*The packaging data refers to the sale of a complete A Frame; an additional charge will be applied to lower quantities to cover the costs of handling and packaging these items. Weights shown here may slightly vary depending on the production lot.

# i-stone **Larsen**

---

Larsen is one of Istones white marble-effect collections, with a strong personality and unique beauty.

Its surface features strong grey veins on a dazzling pure white background. The collection comes in an elegant natural finish.

Finish:  
**Natural**

Thickness:  
**12mm**

Formats:  
**3200X1500X12mm**



Super Blanca  
Natural

## i-stone Larsen

9 number of Faces 

Format	Colour	Finish	Packing			
			Weight of Whole slab	Weight per m <sup>2</sup>	Slabs per A frame	Weight per A frame
150 X 320 cm	Super Blanco-Gris	Natural	150KG*	32 Kg*	20*	3171kg*

\*The packaging data refers to the sale of a complete A Frame; an additional charge will be applied to lower quantities to cover the costs of handling and packaging these items. Weights shown here may slightly vary depending on the production lot.

# i-stone Geo

---

Travertine marble continues to be a popular look in interior design. This Istone model, ideal for use in both kitchens and bathrooms, stands out for its rich dark colours, strong veined pattern, and opulently elegant natural surface.

Finish:  
**Bush-hammered**

Thickness:  
**12mm**

Formats:  
**3200X1500X12mm**





Gris  
Bush-hammered

## i-stone Geo

9 number of Faces 

Format	Colour	Finish	Packing			
			Weight of Whole slab	Weight per m <sup>2</sup>	Slabs per A frame	Weight per A frame
150 X 320 cm	Gris	Bush-hammered	150KG*	32 Kg*	20*	3171kg*

\*The packaging data refers to the sale of a complete A Frame; an additional charge will be applied to lower quantities to cover the costs of handling and packaging these items. Weights shown here may slightly vary depending on the production lot.

i-stone

09 3033226

1st Floor,

The Foundation Building

8 George St, Parnell