

ACUSTICO 12

“ A NEW LIFE NOW ”

VIVA
MADE



il suono della terracotta, colori polverosi

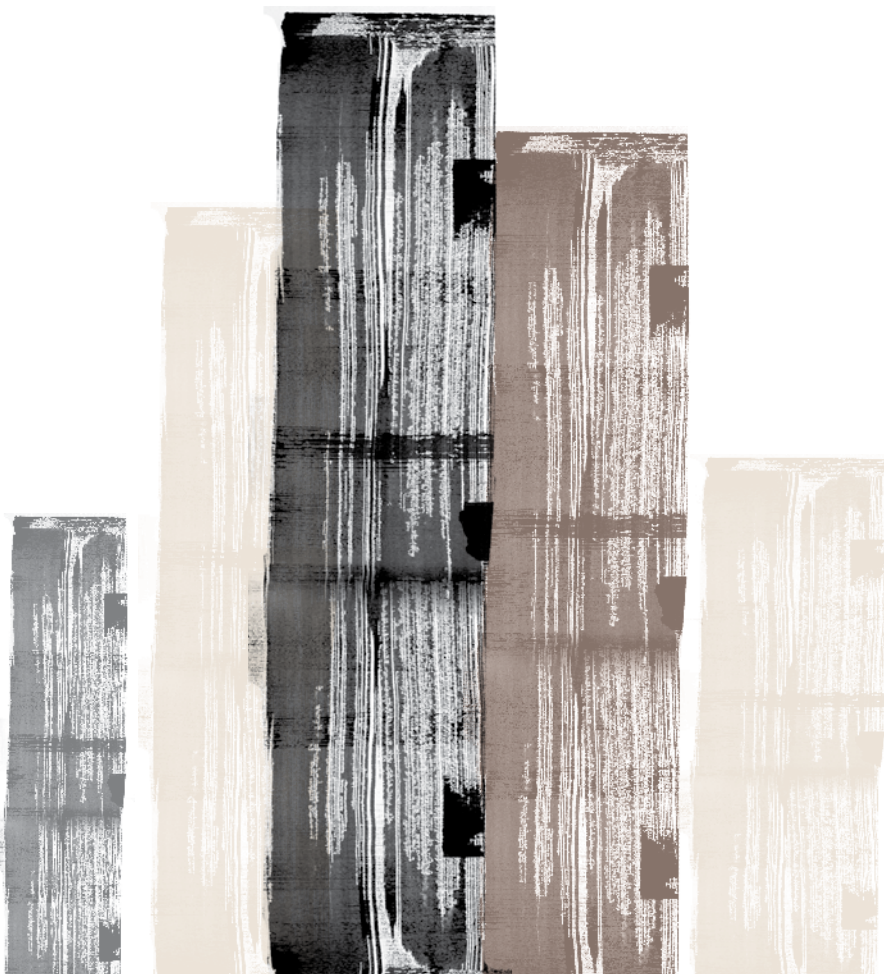
The sound of terracotta, dusty colours.

Le chant de la terre cuite, des couleurs poudrées.

Der Klang von Terrakotta, staubige Farben.

El sonido de la terracota, colores pulverulentos.

Звук терракоты, пыльные цвета.



forme ampie e armonia

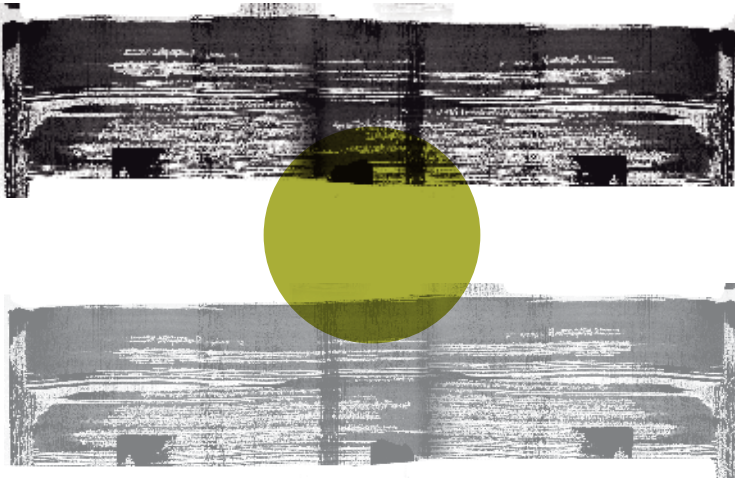
Ample dimensions and harmony.
Des formes généreuses et l'harmonie.
Ausschweifende Formen und Harmonie.
Formas amplias y armonía.
Просторные и гармоничные формы.

le dimensioni si espandono per rispondere al contemporaneo

Sizes expand, reflecting contemporary tastes.
Les formats grandissent pour s'aligner sur les goûts contemporains.
Den Spuren der Moderne folgend erweitern sich die Dimensionen.
Las dimensiones se expanden para responder a lo contemporáneo.
Размеры увеличиваются, отвечая на требования современного образа жизни.

evoluzione e **stile**: idee in movimento

Evolution and style: ever-developing ideas.
Évolution et style: les idées en mouvement.
Evolution und Stil: Ideen in Bewegung.
Evolución y estilo: ideas en movimiento.
Эволюция и стиль: движение идей.



(punti di vista)

point of view



987K3R
SAND NAT. RETT.
60x120 - 23^{5/8}"x47^{1/4}"







307K2SR
COTTO NAT. RETT.
30x30 - 11^{13/16}"x11^{13/16}"

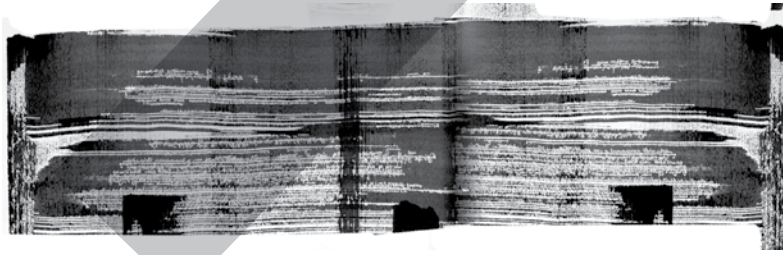
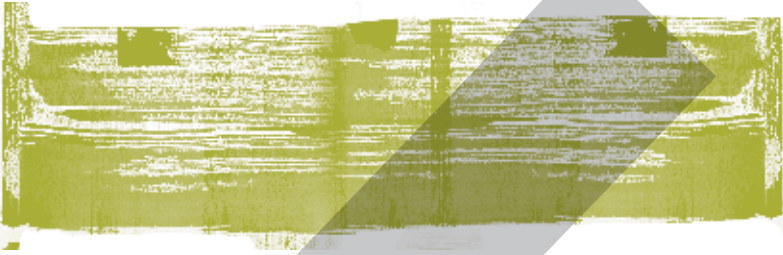
307K2RB
ACUSTICO 30 _ COTTO
30x30 - 11^{13/16}"x11^{13/16}"





307K2SR
COTTO NAT. RETT.
30x30 - 11^{13/16}"x11^{13/16}"

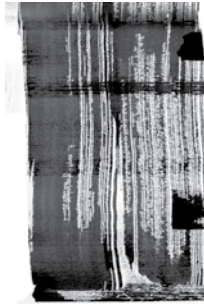
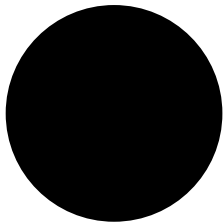
(differenze)
(analogie)







607K8R
GREY NAT. RETT.
60x60 - 23^{5/8}"x23^{5/8}"



(evoluzione)

evolution





557K6R
BROWN NAT. RETT.
30x120 - 11^{13/16}"x47^{1/4}"

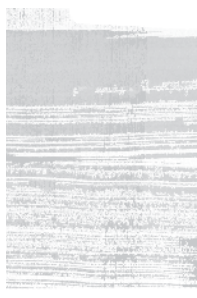
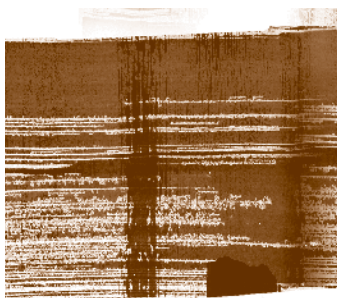
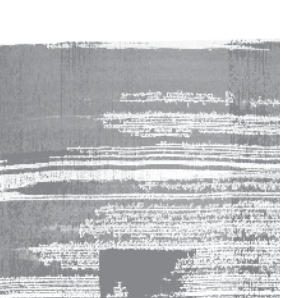
(soluzioni)







987KOR
WHITE NAT. RETT.
60x120 - 23^{5/8}"x47^{1/4}"



and
new
life
now



colori/formati

White



987KOR White
60x120_23⁵/₈"x47¹/₄"

79B ■



557KOR White
30x120_11¹³/₁₆"x47¹/₄"

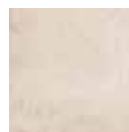
80 ■



607KOR White
60x60_23⁵/₈"x23⁵/₈" 71 ■



637KOSR White
30x60_11¹³/₁₆"x23⁵/₈" 71 ■



307KOSR White
30x30_11¹³/₁₆"x11¹³/₁₆" 67 ■



977KOR White
15x60_5⁷/₈"x23⁵/₈" 78 ■



117KOR White
10x60_3¹⁵/₁₆"x23⁵/₈" 78 ■



607K8RZ White
60x60_23⁵/₈"x23⁵/₈" 71 ■

AntiSlip



Alto traffico pedonale
(es. stazioni ferroviarie,
aeroporti, centri commerciali)

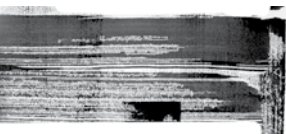
Heavy pedestrian traffic
(e.g. railway stations, airports,
retail malls)

Piétinement intense
(ex. gares, aéroports,
centres commerciaux)

Starker Fußgängerverkehr
(z.B. Bahnhöfe, Flughäfen,
Einkaufszentren)

Alto tráfico peatonal
(por ej. estaciones de tren,
aeropuertos, centros comerciales).

Интенсивное пешеходное движение
(напр., железнодорожные вокзалы,
аэропорты)



Sand



987K3R Sand
 60x120_23^{5/8}"x47^{1/4}"

79B ■



557K3R Sand
 30x120_11^{13/16}"x47^{1/4}"

80 ■



607K3R Sand
 60x60_23^{5/8}"x23^{5/8}"

71 ■



637K3SR Sand
 30x60_11^{13/16}"x23^{5/8}"

71 ■



307K3SR Sand
 30x30_11^{13/16}"x11^{13/16}"

67 ■



977K3R Sand
 15x60_5^{7/8}"x23^{5/8}"

78 ■



117K3R Sand
 10x60_3^{15/16}"x23^{5/8}"

78 ■



607K8RZ White
 60x60_23^{5/8}"x23^{5/8}"

71 ■

AntiSlip



Alto traffico pedonale
 (es. stazioni ferroviarie,
 aeroporti, centri commerciali)

Heavy pedestrian traffic
 (e.g. railway stations, airports,
 retail malls)

Piétinement intense
 (ex. gares, aéroports,
 centres commerciaux)

Starker Fußgängerverkehr
 (z.B. Bahnhöfe, Flughäfen,
 Einkaufszentren)

Alto tráfico peatonal
 (por ej. estaciones de tren,
 aeropuertos, centros comerciales).

Интенсивное пешеходное движение
 (напр., железнодорожные вокзалы,
 аэропорты)

colori/formati

Cotto



987K2R Cotto
60x120_23^{5/8}"x47^{1/4}"

79B ■



557K2R Cotto
30x120_11^{13/16}"x47^{1/4}"

80 ■



607K2R Cotto
60x60_23^{5/8}"x23^{5/8}" 71 ■



637K2SR Cotto
30x60_11^{13/16}"x23^{5/8}" 71 ■



307K2SR Cotto
30x30_11^{13/16}"x11^{13/16}" 67 ■



977K2R Cotto
15x60_5^{7/8}"x23^{5/8}" 78 ■



117K2R Cotto
10x60_3^{15/16}"x23^{5/8}" 78 ■



607K8RZ Cotto
60x60_23^{5/8}"x23^{5/8}" 71 ■

AntiSlip



Alto traffico pedonale
(es. stazioni ferroviarie,
aeroporti, centri commerciali)

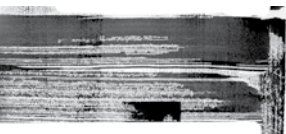
Heavy pedestrian traffic
(e.g. railway stations, airports,
retail malls)

Piétinement intense
(ex. gares, aéroports,
centres commerciaux)

Starker Fußgängerverkehr
(z.B. Bahnhöfe, Flughäfen,
Einkaufszentren)

Alto tráfico peatonal
(por ej. estaciones de tren,
aeropuertos, centros comerciales).

Интенсивное пешеходное движение
(напр., железнодорожные вокзалы,
аэропорты)



Brown



987K6R Brown
 60x120_23^{5/8}"x47^{1/4}"

79B ■



557K6R Brown
 30x120_11^{13/16}"x47^{1/4}"

80 ■



607K6R Brown
 60x60_23^{5/8}"x23^{5/8}"

71 ■



637K6SR Brown
 30x60_11^{13/16}"x23^{5/8}"

71 ■



307K6SR Brown
 30x30_11^{13/16}"x11^{13/16}"

67 ■



977K6R Brown
 15x60_5^{7/8}"x23^{5/8}"

78 ■



117K6R Brown
 10x60_3^{15/16}"x23^{5/8}"

78 ■



607K8RZ White
 60x60_23^{5/8}"x23^{5/8}"

71 ■

AntiSlip



Alto traffico pedonale
 (es. stazioni ferroviarie,
 aeroporti, centri commerciali)

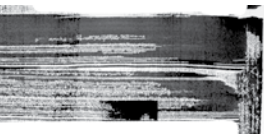
Heavy pedestrian traffic
 (e.g. railway stations, airports,
 retail malls)

Piétinement intense
 (ex. gares, aéroports,
 centres commerciaux)

Starker Fußgängerkehr
 (z.B. Bahnhöfe, Flughäfen,
 Einkaufszentren)

Alto tráfico peatonal
 (por ej. estaciones de tren,
 aeropuertos, centros comerciales).

Интенсивное пешеходное движение
 (напр., железнодорожные вокзалы,
 аэропорты)



colori/formati

Grey



987K8R Grey
60x120_23^{5/8}"x47^{1/4}"

79B ■



557K8R Grey
30x120_11^{13/16}"x47^{1/4}"

80 ■



607K8R Grey
60x60_23^{5/8}"x23^{5/8}" 71 ■



637K8SR Grey
30x60_11^{13/16}"x23^{5/8}" 71 ■



307K8SR Grey
30x30_11^{13/16}"x11^{13/16}" 67 ■



977K8R Grey
15x60_5^{7/8}"x23^{5/8}" 78 ■



117K8R Grey
10x60_3^{15/16}"x23^{5/8}" 78 ■



607K8RZ Grey
60x60_23^{5/8}"x23^{5/8}" 71 ■

AntiSlip



Alto traffico pedonale
(es. stazioni ferroviarie,
aeroporti, centri commerciali)

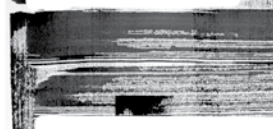
Heavy pedestrian traffic
(e.g. railway stations, airports,
retail malls)

Piétinement intense
(ex. gares, aéroports,
centres commerciaux)

Starker Fußgängerverkehr
(z.B. Bahnhöfe, Flughäfen,
Einkaufszentren)

Alto tráfico peatonal
(por ej. estaciones de tren,
aeropuertos, centros comerciales).

Интенсивное пешеходное движение
(напр., железнодорожные вокзалы,
аэропорты)



ACUSTICO 60



607K0RB White
60x60_23^{5/8}"x23^{5/8}"
PCS. BOX. 3 87 ■



607K3RB Sand
60x60_23^{5/8}"x23^{5/8}"
PCS. BOX. 3 87 ■



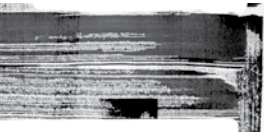
607K2RB Cotto
60x60_23^{5/8}"x23^{5/8}"
PCS. BOX. 3 87 ■



607K6RB Brown
60x60_23^{5/8}"x23^{5/8}"
PCS. BOX. 3 87 ■



607K8RB Grey
60x60_23^{5/8}"x23^{5/8}"
PCS. BOX. 3 87 ■



decori

ACUSTICO 30



307K0RB White
30x30_11^{13/16}"x11^{13/6}"
PCS. BOX. 4

46 ■



307K3RB Sand
30x30_11^{13/16}"x11^{13/6}"
PCS. BOX. 4

46 ■



307K2RB Cotto
30x30_11^{13/16}"x11^{13/6}"
PCS. BOX. 4

46 ■



307K6RB Brown
30x30_11^{13/16}"x11^{13/6}"
PCS. BOX. 4

46 ■



307K8RB Grey
30x30_11^{13/16}"x11^{13/6}"
PCS. BOX. 4

46 ■

FORMA

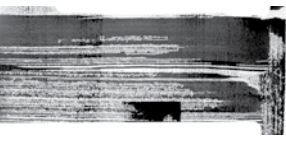


F02000 White
20x20_7^{7/8}"x7^{7/8}"
PCS. BOX. 4

57 ■

F02008 Grey
20x20_7^{7/8}"x7^{7/8}"
PCS. BOX. 4

57 ■



decors - decors - dekore - decorados - декоры

decori

MOSAICO



Z307K0 White
30x30_11^{13/16}"x11^{13/16}"
PCS. BOX. 5 101 ■



Z307K3 Sand
30x30_11^{13/16}"x11^{13/16}"
PCS. BOX. 5 101 ■



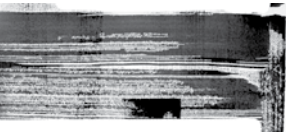
Z307K2 Cotto
30x30_11^{13/16}"x11^{13/16}"
PCS. BOX. 5 101 ■



Z307K6 Brown
30x30_11^{13/16}"x11^{13/16}"
PCS. BOX. 5 101 ■



Z307K8 Grey
30x30_11^{13/16}"x11^{13/16}"
PCS. BOX. 5 101 ■



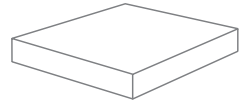
trims - pieces especiales - formteile - piezas especiales - специальные изделия

pezzi speciali



GRADONE - STEP
CR7K0R White
CR7K3R Sand
CR7K2R Cotto
CR7K6R Brown
CR7K8R Grey

33x120x3,2x3,2_12^{15/16}"x47^{1/4}"x1^{1/4}x1^{1/4}
PCS. BOX 2 96 ■



ANGOLARE - CORNER TILE
727K0R White
727K3R Sand
727K2R Cotto
727K6R Brown
727K8R Grey

33x33x3,2x3,2_12^{15/16}"x12^{15/16}"x1^{1/4}x1^{1/4}
PCS. BOX 2 86 ■

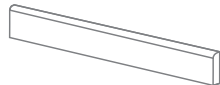


ANGOLARE DX - CORNER TILE DX
AC7K0RD White
AC7K3RD Sand
AC7K2RD Cotto
AC7K6RD Brown
AC7K8RD Grey

33x120x3,2x3,2_12^{15/16}"x47^{1/4}"x1^{1/4}x1^{1/4}
PCS. BOX 2 98 ■

ANGOLARE SX - CORNER TILE SX
AC7K0RS White
AC7K3RS Sand
AC7K2RS Cotto
AC7K6RS Brown
AC7K8RS Grey

33x120x3,2x3,2_12^{15/16}"x47^{1/4}"x1^{1/4}x1^{1/4}
PCS. BOX 2 98 ■



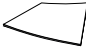

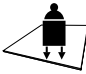
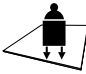




BATTISCOPA - SKIRTING
877K0R White
877K3R Sand
877K2R Cotto
877K6R Brown
877K8R Grey

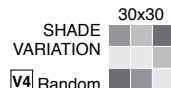
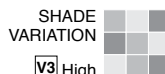
7,5x60_2^{15/16}"x23^{5/8}"
PCS. BOX 15 10 ■

ACUSTICO 12

Dry - Pressed Ceramic Tiles ISO 13006 : 2012 Annex G - UNI EN 14411 : 2012 Annex G - Bla GL



CARATTERISTICHE TECNICHE Technical Features - Caracteristiques Techniques Technische Eigenschaften - Caracteristicas Tecnicas - Технические Характеристики		NORMA Standard - Norme Norm - Norma - Норма	VALORI Value - Valeur Vorgabe - Valor - Средние	
 PLANARITÀ Flatness - Planéité - Ebenflächigkeit - Planiyud - Плоскостность		UNI EN ISO 10545/2	± 0,26% / ± 1,5mm	
		ASTM C485 Warpage		
		Calibrated ± 0,75% (max ± 0,09 in)	-	
		Rectified ± 0,40% (max ± 0,05 in-size ≤ 60cm) (max ± 0,07 in-size > 60cm)	± 0,25% (max ± 0,05 in-size ≤ 60cm) (max ± 0,07 in-size > 60cm)	
 ASSORBIMENTO D'ACQUA - Valore medio in % Water absorption - Average value expressed in % Absorption d'eau - Valeur moyenne en % Wasseraufnahme - Durchschnittswert in % Absorción de agua - Valor medio en % Поглощение воды		UNI EN ISO 10545/3 ≤ 0,5 % ASTM C373	Conforme Compliant	
 RESISTENZA ALLA FLESSIONE Modulus of ropture - Resistance a la flexion Biegefestigkeit - Resistencia a la flexion Прочность на изгиб		UNI EN ISO 10545/4	≥ 50 N/mm ²	
 FORZA DI ROTTURA Breaking strength - Résistance à la rupture Bruchlast - Resistencia a la rotura Разрывное усилие		UNI EN ISO 10545/4 ASTM C648	≥ 2000 N 700 LBS	
 RESISTENZA AL GELO Frost resistance - Résistance au gel - Frostbeständigkeit - Resistencia a las heladas - Морозостойкость		UNI EN ISO 10545/12 ASTM C1026	Conforme Unaffected	
 RESISTENZA CHIMICA ad alte e basse concentrazioni di acidi e basi Chemical resistance to high and low acid and basic concentrations Résistance chimique aux hautes et basses concentrations d'acides et de bases Chemikalienfestigkeit bei hohen und niedrigen Konzentrationen von Säuren und Basen Resistencia química con concentraciones altas y bajas de ácidos y bases Химическая стойкость к высоким и низким концентрациям кислот и щелочей		UNI EN ISO 10545/13 ASTM C-650	GA - GLA - GHA Unaffected	
 RESISTENZA ALLE MACCHIE Stain resistance - Résistance aux taches - Fleckenbeständigkeit- Resistencia a las manchas - Стойкость к образованию пятен		UNI EN ISO 10545/14 CTI 81-7D	5 No Evident Variation	
 COEFFICIENTE DI ATTRITO Slip resistance - Coefficient de glissement - Rutschfestigkeit Barfußbereich - Coeficiente de atrito medio - Коэффициент трения		DIN 51130 DIN 51097 ANSI A 137.1- 2012 DCOF (Section 9.6) B.C.R.A.	NAT. R10 B (A+B) Dry ≥ 0,42 Wet ≥ 0,42 ≥ 0,40	ANTISLIP R11 C (A+B+C) Dry ≥ 0,42 Wet ≥ 0,42 ≥ 0,40



a new life now

IMBALLI E PESI Packing and weight - Emballages et poids - Verpackung und gewicht - Embalajes y pesos - УПАКОВКА И ВЕС

Articolo Item	Formato (cm) Size (cm)	Spessore (mm) Thickness (mm)	Pz. x Scat. Pieces x Box	Mq. x Scat. Sqm x Box	Peso x Scat. (Kg) Weight x Box (Kg)	Scat. x Pal. Boxes x Pal.	Mq. x Pal. Sqm x Pal.	Peso x Pal. (Kg) Weight x Pal. (Kg)
Reference	Format (cm)	Epaisseur (mm)	Pcs / Bte	M ² / Bte	Poids / Bte (Kg)	Bte / Pal.	M ² / Pal.	Poids / Pal. (Kg)
Artikel	Format (cm)	Stärke (mm)	Stk. x Krt.	Qm x Krt.	Gewicht x Krt. (Kg)	Krt. x Pal.	Qm x Pal.	Gewicht x Pal. (Kg)
Articulo	Tamaño (cm)	Espesor (mm)	Pzs x Caja	Mc. x Caja	Peso x Caja (Kg)	Cajas x Pal.	Mc. x Pal.	Peso x Pal. (Kg)
Артикула	Формат (cm)	Толщина (mm)	Кв.М. x Кор.	Кв.М. x Кор.	Вес x Кор. (Kg)	Кор. x Подд.	Кв.М x Подд.	Вес x Подд (Kg)
987K_R	60120	10,5	2	1,440	36,20	22	31,68	796
557K_R	30x120	10,5	4	1,440	34,40	20	28,80	688
607K_R	60x60	10,5	3	1,080	25,00	36	38,88	900
637K_SR	30x60	10,5	6	1,080	25,00	40	43,20	1000
307K_SR	30x30	10,5	12	1,080	26,50	40	43,20	1060
977K_R	15x60	10,5	12	1,080	25,00	50	54,00	1250
117K_R	10x60	10,5	12	0,720	16,70	60	43,20	1002
Z307K_	30x30	10,5	5	0,450	10,50	-	-	-

VIVA
MADE

a brand of **EMILCERAMICA S.p.A.**





a brand of EMILCERAMICA S.p.A.
Sede amministrativa/commerciale:
Via Ghiarola Nuova, 29/33
41042 Fiorano Modenese (MO) Italia
Tel. +39 0536 998701 - Fax +39 0536 998702
info@emilceramicagroup.it - www.cerviva.it